

# Basic Report



**Dreams #1**  
1965  
Jacob Lawrence  
Gouache on paper



**Gertrude Lawrence**  
Julius Kroll  
Ink on vellum



**The Builders**  
1974  
Jacob Lawrence  
Color silkscreen



**Jacob Leisler**  
1913  
Solon H. Borglum  
sculpture; Bronze, reddish brown  
patina



**On the Way**  
1990  
Jacob Lawrence  
Color lithograph



**Jacob Street NY 1932 -  
Towers of Manhattan**  
1932  
Albert E. Flanagan  
Etching

# Basic Report



**Portrait of James Porter**  
1825  
Jacob Eicholtz  
oil on canvas



**Male Figure**  
2012  
Jacob Collins  
Oil on canvas



**Saratoga Springs Victorian**  
c.1938  
Lawrence Kupferman  
Drypoint



**Marlborough St. Mansion**  
1938  
Lawrence Kupferman  
Drypoint



**[Girl in Tree]**  
1922-1995  
Lawrence Beall Smith  
Lithograph



**Bay on Morning, Louisiana**  
after 1954  
Lawrence Edwardson  
Mixed media on paper

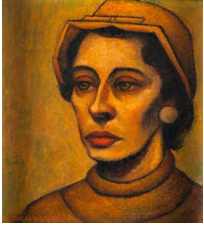
## House of Secret

1946  
Lawrence Sterne Stevens  
Gouache on board



**Tatro's Farm, Avon, CT**  
after 1935  
Lawrence Edwardson  
Oil on board

# Basic Report



**Portrait of Bernice Bentz**

c. 1950

Lawrence Edwardson

Oil on board



**Stowaway**

1953

Barbara Schwinn-Jordan

Gouache on illustration board



**Immigrant with Child from  
Woman's Home  
Companion, McCalls or  
Ladies Home Journal**

c.1953

Barbara Schwinn-Jordan

Gouache on board

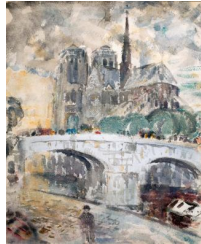


**The Parade**

1950

Daniel Calabrese

Gouache on board



**Notre Dame, Paris**

1909

John Marin

Watercolor on wove paper



**Summer Bather**

c. 1939

Richard Edward Miller

Oil on wood panel

# Basic Report



**Memento Vivere, Notre Dame, Evreux**  
1947  
John Taylor Arms  
Etching



**On and On**  
1951  
Milton Gershgoren  
Color silkscreen



**Nocturnal Cathedral**  
1951  
Eugene Berman  
Lithograph



**Construction**  
1951  
Carol Summers  
Color woodcut



**Haitian Tapestry**  
1950  
Adolf Arthur Dehn  
Lithograph



**Beaching the Dory**  
c. 1950  
Robert Von Neumann  
Lithograph

# Basic Report



**The Jackson Family**

c. 1950  
Martin Jackson  
Lithograph



**Sketch #3 for "Nude in Interior"**

c. 1947  
Isabel Bishop  
Gouache and pastel on photostat  
of drawing (see memo)



**Nude in Interior**

1947  
Isabel Bishop  
Oil and tempera on canvas



**Jared Sparks**

1827-1828  
Gilbert Stuart  
Oil on canvas



**The Fun Vender**

1952-1953  
John A. Wedda  
Watercolor



**St. Germain**

1953  
Robert Freiman  
Watercolor on paper



**Posters on the Wall**

1953  
Robert Freiman  
Watercolor on paper



# Basic Report



**Blue Jay**  
1917-1961  
Sascha Maurer  
Watercolor on paper



**Two Shore Birds**  
1956  
Glen Krause  
Watercolor and sand on paper



**Country Breakfast**  
1884  
Edward Lamson Henry  
Oil on board



**Trimenbal**  
1927-1977  
Herbert J. Gute  
Watercolor on paper mounted on board



**Winter in New England**  
1851  
George Henry Durrie  
Oil on wood panel



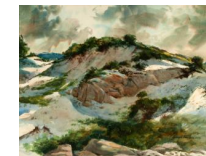
**Still Life with Snake Skin**  
1960  
Estelle Coniff  
Watercolor



**Stonington, Connecticut**  
1931-2003  
Charles DeCarlo  
Watercolor on board



**The Artist's Daughter**  
1842  
Thomas Sully  
Oil on canvas

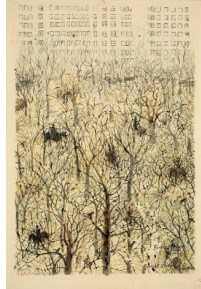


**Shadowed Sands**  
1928-1996  
Joseph Santoro  
Watercolor on paper

# Basic Report



**First Snow**  
1957  
Adolf Arthur Dehn  
Watercolor on paper



**Spring in Central Park**  
1960  
Garrett Price  
Watercolor



**Ipswich Marshes**  
1867  
Martin Johnson Heade  
Oil on canvas



**McGinty's Place**  
1926-1996  
Harry Anderson  
Watercolor



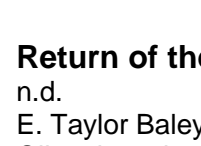
**Crusher**  
1959  
Frederic Whitaker  
Watercolor on paper



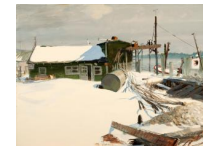
**Old Harbor**  
1959  
Irving Katzenstein  
Watercolor on paper



**Lake Wawayanda, Sussex County, New Jersey**  
1870  
Jasper Francis Cropsey  
Oil on canvas



**Return of the Whaler**  
n.d.  
E. Taylor Baley  
Oil on board



**First Snow**  
1929-1997  
Tom Lovell  
Watercolor on board

# Basic Report



**#3 Nude Playing Guitar**

1961

Robert Fawcett

Crayon on paper



**Figure Study (Girl in Repose)**

1923-1967

Robert Fawcett

Crayon and wash on board



**#9 Reclining Nude**

1962

Robert Fawcett

Crayon on paper



**#21 Nude Resting**

1961

Robert Fawcett

Crayon on paper



**Soufriere Study, St. Lucia  
(Volcano Study)**

1947

Homer Pfeiffer

Watercolor on paper



# Basic Report



## **Shirley**

1962  
Burton Silverman  
Pastel on tan paper



## **Vineyard Homestead**

1956  
Sanford B.D. Low  
Watercolor

## **The Drunkard**

1933  
Sanford B.D. Low  
Oil on canvas



## **Winter Sunset**

1837-1907  
Benjamin Champney  
Oil on canvas



## **Autumn Afternoon, The Highlands**

1961  
Sanford B.D. Low  
Watercolor on board



## **Nova Scotia Fisherman**

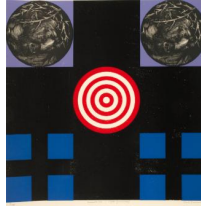
1939  
Adlai Hardin  
Sculpture; bronze

# Basic Report



## **All That is Beautiful**

1965  
Ben Shahn  
Color silkscreen with hand coloring



## **"Dallas", November 22 (after Grunewald)**

1962  
Sante Graziani  
Color woodcut and wood engraving



## **"Monsieur Bertin" (after Ingres)**

1965  
Sante Graziani  
Pencil on paper



## **Victoria's Children**

1967  
Peter Winslow Milton  
Etching and engraving



## **Sampans, Hong Kong**

c. 1935  
William S. Horton  
Pastel



## **Isadora Duncan**

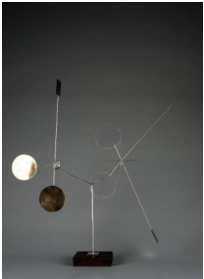
1900-1965  
Abraham Walkowitz  
Watercolor

# Basic Report



## **Green Stockings**

1885-1929  
Robert Henri  
Pastel on paper



## **Mobile Horizontal Sculpture (Circle Square Series)**

1968  
Stephen Day  
Sculpture; brass, metal and plastic

## **Brick and Plaster**

1966  
Clifford Mitchell  
Collage



## **Study for Thetis Bringing Armor to Achilles**

1805-1806  
Benjamin West  
Pen and ink on paper



## **The Art Tour**

1903-1970  
Rube Goldberg  
Sculpture; bronze



## **Summer Field**

1966  
Richard Claude Ziemann  
Etching and engraving

# Basic Report



## **Garden Gate**

1966  
John Neff  
Watercolor



## **Vendor sketch**

1876-1933  
John Haberle  
Graphite on board



## **Leda II**

1963  
Wolfgang Behl  
Sculpture; bronze, blackish brown  
patina



## **Hudsonian Godwit**

1835  
John James Audubon  
Engraving and aquatint with hand  
coloring



## **Waiting for the Revolution**

1934  
Thomas Hart Benton  
Lithograph



## **Carousel #3**

1938-1971  
Mitchell Pappas  
Etching

## **After El Greco**

1968  
William Patterson  
Etching



## **Red Red Eclipse**

1967  
Gabor Peterdi  
Color etching



## **The Dragon**

c. 1968  
Sabra Johnson  
Color linoleum cut

# Basic Report

## Wind Series; American Border

1969

William D. Thomson

Color silkscreen



## The Weeders

1962

Amy Jones

Etching



## New Orleans Studies

c. 1890

John Haberle

Graphite on paper



## Studies of Mice and Cat

1876-1933

John Haberle

Graphite on verso of unused bank check mounted on board



## Marine

1889-1898

William Sonntag Jr.

Watercolor on paper

## Blue Presence

1970

Richard Pousette-Dart

Oil on board



## Sin

1970

Edward Ruscha

Color silkscreen



## For the Pleasures of Fashion (Summer Unit)

1967-1970

Larry Rivers

Color etching



## Nude (For Sedfre)

1969

Tom Wesselmann

Color silkscreen

# Basic Report



## **Dot Doodle (and verso)**

1913-1967

Charles Ephraim Burchfield

Graphite on paper



## **Insect Doodle (and verso)**

1913-1967

Charles Ephraim Burchfield

Graphite on paper



## **Organic Doodle (and verso)**

1913-1967

Charles Ephraim Burchfield

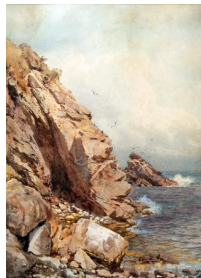
Graphite on paper

## **In the Beginning**

1972

Priscilla Manning Porter

sculpture; Glass



## **Marine Cliffs**

c. 1880

William Trost Richards

Watercolor and graphite on paper



## **Sketches for Queen Nicotine, Autumn and a snake**

1876-1933

John Haberle

Graphite on paper



# Basic Report



**Sorghum Mill**

1969  
Thomas Hart Benton  
Lithograph



**Lydia Lynde**

ca. 1762-64  
John Singleton Copley  
Oil on canvas mounted on  
Masonite



**Rigger's Shop,  
Provincetown, MA**

1900  
Childe Hassam  
Oil on canvas



**The White Mountains**

c. 1871  
Sanford Robinson Gifford  
Oil on canvas



**Landscape**

1869  
John William Hill  
Watercolor and gouache on wove  
paper



**Still Life**

1874  
John William Hill  
Watercolor on paper



**Woman in the Window II**

1975  
Aaron Shikler  
Pastel on canvas



**Work Car, Brewster, New  
York**

1977  
Sperry Andrews  
Watercolor on paper



**Wreck of the Roma**

1846  
Fitz Hugh (Henry) Lane  
Oil on canvas [appears lined]

# Basic Report



**Pile Driver, Bridgeport, Connecticut**

1977

Sperry Andrews

Watercolor on paper



**Our Good Earth**

1942

John Steuart Curry

Lithograph



**White Head, Monhegan**

1858

Aaron Draper Shattuck

Graphite on paper mounted on acetate



**Chocorua Peak**

1854

Aaron Draper Shattuck

Pencil on paper



**Mount Desert, Maine**

1852-1928

Aaron Draper Shattuck

Graphite on paper

**Granby, Connecticut (Salmon River)**

1869

Aaron Draper Shattuck

Graphite on paper (originally board)

**On Mt. Moriah (Near Gorham, New Hampshire)**

1858

Aaron Draper Shattuck

Graphite on paper (originally board)



**Coneflowers**

1854-1923

Fidelia Bridges

Watercolor on blue paper



**Artists Judging Works of Art, second state**

1916

George Wesley Bellows

Lithograph

# Basic Report



**Murder of Edith Cavell**  
1918  
George Wesley Bellows  
Lithograph



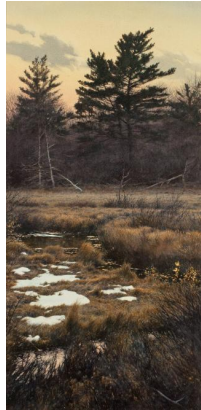
**Rita Benton**  
1907-1966  
William Zorach  
Graphite on paper



**Sketch for "Widow"**  
1942  
Julian E. Levi  
Ink and chalk on board



**Westminster Evening**  
1909  
Joseph Pennell  
Mezzotint



**Abington Brook**  
1983  
Robert Verity Clem  
Watercolor



**A Gale at Fecamp  
(Normandie)**  
1886  
Stephen Parrish  
Etching

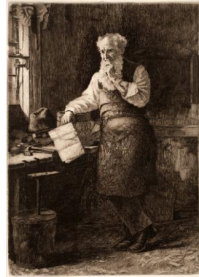
# Basic Report



## **View Near Rome**

1854

George Loring Brown  
Etching



## **Thinking It Over**

1884

Thomas Waterman Wood  
Etching



## **Hail America**

1908

Joseph Pennell  
Mezzotint



## **Model Draping**

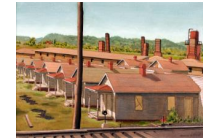
1890

James Abbott McNeill Whistler  
Lithograph

## **Keene Valley, New York**

1868

James D. Smillie  
Oil on board

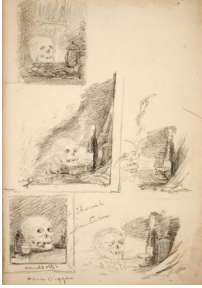


## **Company Houses**

1932

Clarence Holbrook Carter  
Watercolor on paper

# Basic Report



## **Skull sketches**

c. 1889  
John Haberle  
Graphite on board



## **Dark Wings**

1953-1954  
Sylvia Wald  
Color silkscreen



## **Studies of Mice and Story Vignettes**

1876-1933  
John Haberle  
Graphite on verso of unused  
bank check mounted on board



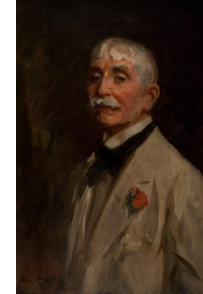
## **Artemis**

1908  
Bela Lyon Pratt  
sculpture; Bronze



## **Military Men**

1966  
Marina Stern  
Oil on canvas



## **John Gellatly**

c.1931  
Irving Ramsey Wiles  
Oil on canvas

# Basic Report



**A Tuscan Girl**

1831  
Washington Allston  
Oil on wood panel



**Nocturne**

2000  
Willard Lustenader  
Oil on canvas



**Blue and Beyond Blue**

2000  
Dale Chihuly  
Blown Glass, Steel

**Master of Arts**

c. 1878  
Frank Duveneck  
Oil on canvas



**The Flight**

1916  
Eugene Higgins  
Oil on board



**Bridge**

2006  
Peter Waite  
Acrylic on panels

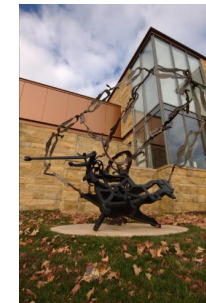


**Coming Home**

1930-1985  
Eric Sloane  
Oil on board

**The Alphabet Series**

1961-2012  
Les Lourigan  
pen and marker on paper



**Indicate**

1982  
Nancy Graves  
Cast iron and Corten steel



# Basic Report



## **Suzi**

2010

Norbert Brunner  
Plexiglass, adhesive foil



## **Nude**

1961

Robert Fawcett  
Crayon on paper



## **Untitled (Blue Nature)**

2012

Aaron Wexler  
Paper collage on panel

## **Mural Pictograph 1**

2015

Nicholas Napoletano

## **Cheerfully Rooting through Ruby Red Detritus**

2013

Andrew Erdos

Mouth blown silverized glass, two  
way mirror, colored crystal, LED  
lights.

## **Mural Pictograph 2**

2015

Nicholas Napoletano

# Basic Report



**Crest of Pine Mountain,  
Where General Polk Fell,  
from "Harper's Pictorial  
History of the Civil War  
(Annotated)"**

2005

Kara Walker

Offset lithography and silkscreen  
on Somerset Textured paper



**Occupation of Alexandria,  
from "Harper's Pictorial  
History of the Civil War  
(Annotated)"**

2005

Kara Walker

Offset lithography and silkscreen  
on Somerset Textured paper



**Deadbrook after the Battle  
of Ezra's Church, from  
"Harper's Pictorial History  
of the Civil War  
(Annotated)"**

2005

Kara Walker

Offset lithography and silkscreen  
on Somerset Textured paper



**Banks's Army Leaving  
Simmsport, from "Harper's  
Pictorial History of the Civil  
War (Annotated)"**

2005

Kara Walker

Offset lithography and silkscreen  
on Somerset Textured paper



**Foote's Gun-Boats  
Ascending to Attack Fort  
Henry, from "Harper's  
Pictorial History of the Civil  
War (Annotated)"**

2005

Kara Walker

Offset lithography and silkscreen  
on Somerset Textured paper



**An Army Train, from  
"Harper's Pictorial History  
of the Civil War  
(Annotated)"**

2005

Kara Walker

Offset lithography and silkscreen  
on Somerset Textured paper

# Basic Report



**Lost Mountain at Sunrise,  
from "Harper's Pictorial  
History of the Civil War  
(Annotated)"**

2005

Kara Walker

Offset lithography and silkscreen  
on Somerset Textured paper



**Scene of McPherson's  
Death, from "Harper's  
Pictorial History of the Civil  
War (Annotated)"**

2005

Kara Walker

Offset lithography and silkscreen  
on Somerset Textured paper

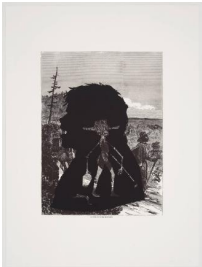


**Confederate Prisoners  
Being Conducted from  
Jonesborough to Atlanta,  
from "Harper's Pictorial  
History of the Civil War  
(Annotated)"**

2005

Kara Walker

Offset lithography and silkscreen  
on Somerset Textured paper



**Pack-Mules in the  
Mountains, from "Harper's  
Pictorial History of the Civil  
War (Annotated)"**

2005

Kara Walker

Offset lithography and silkscreen  
on Somerset Textured paper



**Cotton Hoards in Southern  
Swamp, from "Harper's  
Pictorial History of the Civil  
War (Annotated)"**

2005

Kara Walker

Offset lithography and silkscreen  
on Somerset Textured paper



**Exodus of Confederates  
from Atlanta, from  
"Harper's Pictorial History  
of the Civil War  
(Annotated)"**

2005

Kara Walker

Offset lithography and silkscreen  
on Somerset Textured paper

# Basic Report

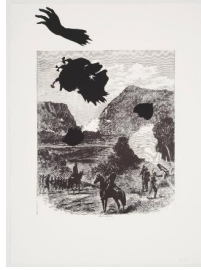


**Signal Station, Summit of Maryland Heights, from "Harper's Pictorial History of the Civil War (Annotated)"**

2005

Kara Walker

Offset lithography and silkscreen on Somerset Textured paper



**Buzzard's Roost Pass, from "Harper's Pictorial History of the Civil War (Annotated)"**

2005

Kara Walker

Offset lithography and silkscreen on Somerset Textured paper



**Alabama Loyalists Greeting the Federal Gun-Boats, from "Harper's Pictorial History of the Civil War (Annotated)"**

2005

Kara Walker

Offset lithography and silkscreen on Somerset Textured paper



**Migration: Africa to America II**

2006

Betye Saar

Mixed media assemblage



**August**

1966

Casein tempera on board



**Message to the Sticklands**

1897

Watercolor and ink on paper

**The Swallow**

1968

Acrylic polymer on board

# Basic Report



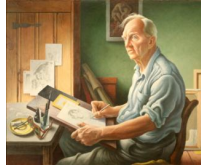
## **Time and Eternity**

c. 1889-90  
John Haberle  
Oil on canvas



## **Early Morning Light**

1882  
John Ferguson Weir  
Oil on canvas



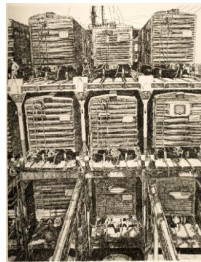
## **Denys Wortman**

1953  
Thomas Hart Benton  
Oil on canvas mounted on board



## **Approaching Storm (Noon)**

1938  
Thomas Hart Benton  
Lithograph



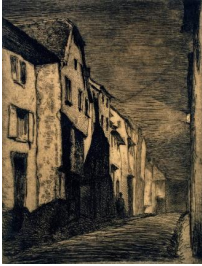
## **The Sea Train**

1951  
Philip Kappel  
Etching

## **From the Protractor Series**

1977  
Frank Stella  
Color lithograph and silkscreen  
PROOF 1 OF 3

# Basic Report



## **Street at Saverne**

1858  
James Abbott McNeill Whistler  
Etching on gold tone chine colle



## **Short Days Ago**

1968  
John Potter Wheat  
Acrylic polymer on canvas



## **East River from the 30th Story of Shelton Hotel**

1928  
Georgia O'Keeffe  
Oil on canvas



## **Untitled**

1877-1942  
Philip Little  
Watercolor



## **Blue Headed Pigeon**

1838  
John James Audubon  
Engraving and aquatint with hand  
coloring