

Basic Report



Dreams #1
1965
Jacob Lawrence
Gouache on paper



The Builders
1974
Jacob Lawrence
Color silkscreen



On the Way
1990
Jacob Lawrence
Color lithograph



**Jacob Street NY 1932 -
Towers of Manhattan**
1932
Albert E. Flanagan
Etching



Saratoga Springs Victorian
c.1938
Lawrence Kupferman
Drypoint



Marlborough St. Mansion
1938
Lawrence Kupferman
Drypoint

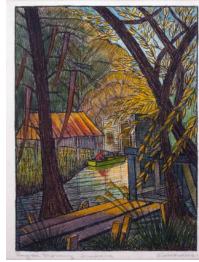
Basic Report



[Girl in Tree]

1922-1995

Lawrence Beall Smith
Lithograph



Bay on Morning, Louisiana

after 1954

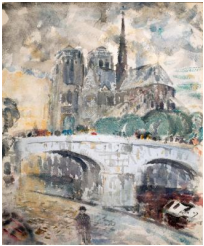
Lawrence Edwardson
Mixed media on paper



The Parade

1950

Daniel Calabrese
Gouache on board



Notre Dame, Paris

1909

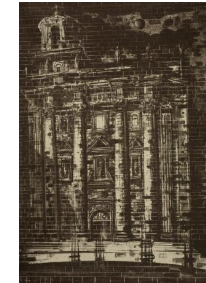
John Marin
Watercolor on wove paper



**Memento Vivere, Notre
Dame, Evreux**

1947

John Taylor Arms
Etching



Nocturnal Cathedral

1951

Eugene Berman
Lithograph

Basic Report



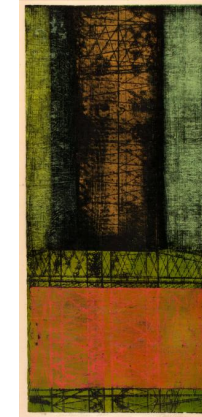
Haitian Tapestry

1950
Adolf Arthur Dehn
Lithograph



On and On

1951
Milton Gershgoren
Color silkscreen



Construction

1951
Carol Summers
Color woodcut



Beaching the Dory

c. 1950
Robert Von Neumann
Lithograph



The Jackson Family

c. 1950
Martin Jackson
Lithograph



Sketch #3 for "Nude in Interior"

c. 1947
Isabel Bishop
Gouache and pastel on photostat
of drawing (see memo)

Basic Report



The Fun Vender

1952-1953
John A. Wedda
Watercolor



Blue Jay

1917-1961
Sascha Maurer
Watercolor on paper



Two Shore Birds

1956
Glen Krause
Watercolor and sand on paper



St. Germain

1953
Robert Freiman
Watercolor on paper



Posters on the Wall

1953
Robert Freiman
Watercolor on paper



Trimenbal

1927-1977
Herbert J. Gute
Watercolor on paper mounted on board



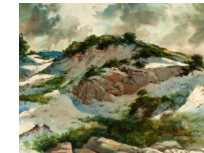
Stonington, Connecticut

1931-2003
Charles DeCarlo
Watercolor on board



Still Life with Snake Skin

1960
Estelle Coniff
Watercolor



Shadowed Sands

1928-1996
Joseph Santoro
Watercolor on paper

Basic Report



First Snow
1957
Adolf Arthur Dehn
Watercolor on paper



McGinty's Place
1926-1996
Harry Anderson
Watercolor



Crusher
1959
Frederic Whitaker
Watercolor on paper



Old Harbor
1959
Irving Katzenstein
Watercolor on paper



First Snow
1929-1997
Tom Lovell
Watercolor on board



#3 Nude Playing Guitar
1961
Robert Fawcett
Crayon on paper



#9 Reclining Nude
1962
Robert Fawcett
Crayon on paper



#21 Nude Resting
1961
Robert Fawcett
Crayon on paper



Figure Study (Girl in Repose)
1923-1967
Robert Fawcett
Crayon and wash on board

Basic Report



**Soufriere Study, St. Lucia
(Volcano Study)**

1947
Homer Pfeiffer
Watercolor on paper



Shirley

1962
Burton Silverman
Pastel on tan paper



**Autumn Afternoon, The
Highlands**

1961
Sanford B.D. Low
Watercolor on board



Vineyard Homestead

1956
Sanford B.D. Low
Watercolor



All That is Beautiful

1965
Ben Shahn
Color silkscreen with hand
coloring



**"Dallas", November 22
(after Grunewald)**

1962
Sante Graziani
Color woodcut and wood
engraving

Basic Report



"Monsieur Bertin" (after Ingres)

1965
Sante Graziani
Pencil on paper



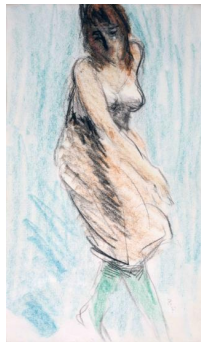
Victoria's Children
1967
Peter Winslow Milton
Etching and engraving



Sampans, Hong Kong
c. 1935
William S. Horton
Pastel



Isadora Duncan
1900-1965
Abraham Walkowitz
Watercolor



Green Stockings
1885-1929
Robert Henri
Pastel on paper

Brick and Plaster
1966
Clifford Mitchell
Collage

Basic Report



**Study for Thetis Bringing
Armor to Achilles**

1805-1806
Benjamin West
Pen and ink on paper



Vendor sketch

1876-1933
John Haberle
Graphite on board



Carousel #3

1938-1971
Mitchell Pappas
Etching



Summer Field

1966
Richard Claude Ziemann
Etching and engraving



Hudsonian Godwit

1835
John James Audubon
Engraving and aquatint with hand
coloring

After El Greco

1968
William Patterson
Etching



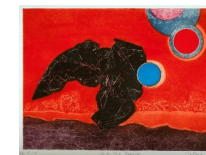
Garden Gate

1966
John Neff
Watercolor



Waiting for the Revolution

1934
Thomas Hart Benton
Lithograph



Red Red Eclipse

1967
Gabor Peterdi
Color etching

Basic Report



The Dragon

c. 1968
Sabra Johnson
Color linoleum cut



New Orleans Studies

c. 1890
John Haberle
Graphite on paper



For the Pleasures of Fashion (Summer Unit)

1967-1970
Larry Rivers
Color etching

Wind Series; American Border

1969
William D. Thomson
Color silkscreen



The Weeders

1962
Amy Jones
Etching



Marine

1889-1898
William Sonntag Jr.
Watercolor on paper



Sin

1970
Edward Ruscha
Color silkscreen



Nude (For Sedfre)

1969
Tom Wesselmann
Color silkscreen



Dot Doodle (and verso)

1913-1967
Charles Ephraim Burchfield
Graphite on paper

Basic Report



Insect Doodle (and verso)

1913-1967

Charles Ephraim Burchfield

Graphite on paper



Sketches for Queen Nicotine, Autumn and a snake

1876-1933

John Haberle

Graphite on paper



Organic Doodle (and verso)

1913-1967

Charles Ephraim Burchfield

Graphite on paper



Marine Cliffs

c. 1880

William Trost Richards

Watercolor and graphite on paper



Sorghum Mill

1969

Thomas Hart Benton

Lithograph



Landscape

1869

John William Hill

Watercolor and gouache on wove
paper

Basic Report



Still Life

1874
John William Hill
Watercolor on paper



Woman in the Window II

1975
Aaron Shikler
Pastel on canvas



Work Car, Brewster, New York

1977
Sperry Andrews
Watercolor on paper



Pile Driver, Bridgeport, Connecticut

1977
Sperry Andrews
Watercolor on paper



Our Good Earth

1942
John Steuart Curry
Lithograph



White Head, Monhegan

1858
Aaron Draper Shattuck
Graphite on paper mounted on acetate



Chocorua Peak

1854
Aaron Draper Shattuck
Pencil on paper



Mount Desert, Maine

1852-1928
Aaron Draper Shattuck
Graphite on paper

Granby, Connecticut (Salmon River)

1869
Aaron Draper Shattuck
Graphite on paper (originally board)

Basic Report

On Mt. Moriah (Near Gorham, New Hampshire)

1858

Aaron Draper Shattuck

Graphite on paper (originally
board)



Murder of Edith Cavell

1918

George Wesley Bellows

Lithograph



Westminster Evening

1909

Joseph Pennell

Mezzotint



Coneflowers

1854-1923

Fidelia Bridges

Watercolor on blue paper



Rita Benton

1907-1966

William Zorach

Graphite on paper



Artists Judging Works of Art, second state

1916

George Wesley Bellows

Lithograph



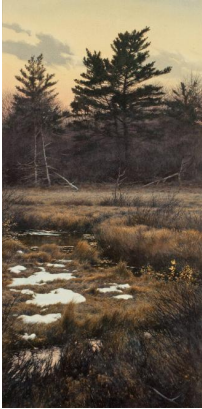
Sketch for "Widow"

1942

Julian E. Levi

Ink and chalk on board

Basic Report



Abington Brook

1983
Robert Verity Clem
Watercolor



Model Draping

1890
James Abbott McNeill Whistler
Lithograph



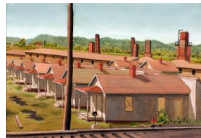
A Gale at Fecamp (Normandie)

1886
Stephen Parrish
Etching



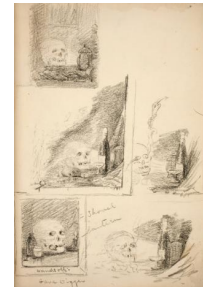
Hail America

1908
Joseph Pennell
Mezzotint



Company Houses

1932
Clarence Holbrook Carter
Watercolor on paper



Skull sketches

c. 1889
John Haberle
Graphite on board

Basic Report



Studies of Mice and Story Vignettes

1876-1933

John Haberle

Graphite on verso of unused
bank check mounted on board



Nude

1961

Robert Fawcett

Crayon on paper



Dark Wings

1953-1954

Sylvia Wald

Color silkscreen



Crest of Pine Mountain, Where General Polk Fell, from "Harper's Pictorial History of the Civil War (Annotated)"

2005

Kara Walker

Offset lithography and silkscreen
on Somerset Textured paper

The Alphabet Series

1961-2012

Les Hourigan

pen and marker on paper



Occupation of Alexandria, from "Harper's Pictorial History of the Civil War (Annotated)"

2005

Kara Walker

Offset lithography and silkscreen
on Somerset Textured paper

Basic Report



Deadbrook after the Battle of Ezra's Church, from "Harper's Pictorial History of the Civil War (Annotated)"

2005

Kara Walker

Offset lithography and silkscreen on Somerset Textured paper



Banks's Army Leaving Simmsport, from "Harper's Pictorial History of the Civil War (Annotated)"

2005

Kara Walker

Offset lithography and silkscreen on Somerset Textured paper



Foote's Gun-Boats Ascending to Attack Fort Henry, from "Harper's Pictorial History of the Civil War (Annotated)"

2005

Kara Walker

Offset lithography and silkscreen on Somerset Textured paper



An Army Train, from "Harper's Pictorial History of the Civil War (Annotated)"

2005

Kara Walker

Offset lithography and silkscreen on Somerset Textured paper



Lost Mountain at Sunrise, from "Harper's Pictorial History of the Civil War (Annotated)"

2005

Kara Walker

Offset lithography and silkscreen on Somerset Textured paper



Scene of McPherson's Death, from "Harper's Pictorial History of the Civil War (Annotated)"

2005

Kara Walker

Offset lithography and silkscreen on Somerset Textured paper

Basic Report



**Confederate Prisoners
Being Conducted from
Jonesborough to Atlanta,
from "Harper's Pictorial
History of the Civil War
(Annotated)"**

2005

Kara Walker

Offset lithography and silkscreen
on Somerset Textured paper



**Exodus of Confederates
from Atlanta, from
"Harper's Pictorial History
of the Civil War
(Annotated)"**

2005

Kara Walker

Offset lithography and silkscreen
on Somerset Textured paper



**Pack-Mules in the
Mountains, from "Harper's
Pictorial History of the Civil
War (Annotated)"**

2005

Kara Walker

Offset lithography and silkscreen
on Somerset Textured paper



**Signal Station, Summit of
Maryland Heights, from
"Harper's Pictorial History
of the Civil War
(Annotated)"**

2005

Kara Walker

Offset lithography and silkscreen
on Somerset Textured paper



**Cotton Hoards in Southern
Swamp, from "Harper's
Pictorial History of the Civil
War (Annotated)"**

2005

Kara Walker

Offset lithography and silkscreen
on Somerset Textured paper



**Buzzard's Roost Pass,
from "Harper's Pictorial
History of the Civil War
(Annotated)"**

2005

Kara Walker

Offset lithography and silkscreen
on Somerset Textured paper

Basic Report



**Alabama Loyalists
Greeting the Federal Gun-
Boats, from "Harper's
Pictorial History of the Civil
War (Annotated)"**

2005

Kara Walker

Offset lithography and silkscreen
on Somerset Textured paper



Message to the Sticklands

1897

Watercolor and ink on paper

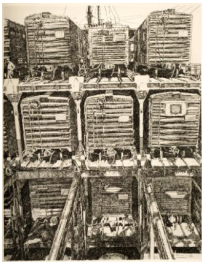


Approaching Storm (Noon)

1938

Thomas Hart Benton

Lithograph



The Sea Train

1951

Philip Kappel

Etching

From the Protractor Series

1977

Frank Stella

Color lithograph and silkscreen

PROOF 1 OF 3



Street at Saverne

1858

James Abbott McNeill Whistler

Etching on gold tone chine colle

Basic Report

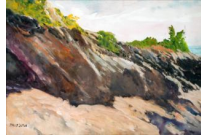


Blue Headed Pigeon

1838

John James Audubon

Engraving and aquatint with hand coloring



Untitled

1877-1942

Philip Little

Watercolor