

Basic Report



Stowaway

1953

Barbara Schwinn-Jordan

Gouache on illustration board



Immigrant with Child from Woman's Home Companion, McCalls or Ladies Home Journal

c.1953

Barbara Schwinn-Jordan

Gouache on board



Sketch #3 for "Nude in Interior"

c. 1947

Isabel Bishop

Gouache and pastel on photostat
of drawing (see memo)



Nude in Interior

1947

Isabel Bishop

Oil and tempera on canvas



Still Life with Snake Skin

1960

Estelle Coniff

Watercolor



The Dragon

c. 1968

Sabra Johnson

Color linoleum cut

Basic Report



The Weeders

1962
Amy Jones
Etching



Military Men

1966
Marina Stern
Oil on canvas

In the Beginning

1972
Priscilla Manning Porter
sculpture; Glass



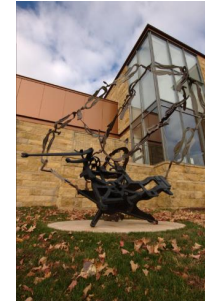
Dark Wings

1953-1954
Sylvia Wald
Color silkscreen



Coneflowers

1854-1923
Fidelia Bridges
Watercolor on blue paper



Indicate

1982
Nancy Graves
Cast iron and Corten steel

Basic Report



**Crest of Pine Mountain,
Where General Polk Fell,
from "Harper's Pictorial
History of the Civil War
(Annotated)"**

2005

Kara Walker

Offset lithography and silkscreen
on Somerset Textured paper



**Occupation of Alexandria,
from "Harper's Pictorial
History of the Civil War
(Annotated)"**

2005

Kara Walker

Offset lithography and silkscreen
on Somerset Textured paper



**Deadbrook after the Battle
of Ezra's Church, from
"Harper's Pictorial History
of the Civil War
(Annotated)"**

2005

Kara Walker

Offset lithography and silkscreen
on Somerset Textured paper



**Banks's Army Leaving
Simmsport, from "Harper's
Pictorial History of the Civil
War (Annotated)"**

2005

Kara Walker

Offset lithography and silkscreen
on Somerset Textured paper



**Foote's Gun-Boats
Ascending to Attack Fort
Henry, from "Harper's
Pictorial History of the Civil
War (Annotated)"**

2005

Kara Walker

Offset lithography and silkscreen
on Somerset Textured paper



**An Army Train, from
"Harper's Pictorial History
of the Civil War
(Annotated)"**

2005

Kara Walker

Offset lithography and silkscreen
on Somerset Textured paper

Basic Report



**Lost Mountain at Sunrise,
from "Harper's Pictorial
History of the Civil War
(Annotated)"**

2005

Kara Walker

Offset lithography and silkscreen
on Somerset Textured paper



**Scene of McPherson's
Death, from "Harper's
Pictorial History of the Civil
War (Annotated)"**

2005

Kara Walker

Offset lithography and silkscreen
on Somerset Textured paper

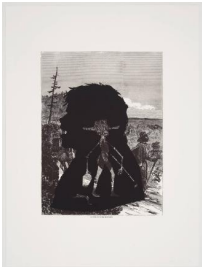


**Confederate Prisoners
Being Conducted from
Jonesborough to Atlanta,
from "Harper's Pictorial
History of the Civil War
(Annotated)"**

2005

Kara Walker

Offset lithography and silkscreen
on Somerset Textured paper



**Pack-Mules in the
Mountains, from "Harper's
Pictorial History of the Civil
War (Annotated)"**

2005

Kara Walker

Offset lithography and silkscreen
on Somerset Textured paper

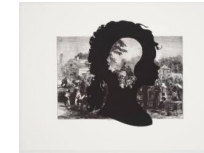


**Cotton Hoards in Southern
Swamp, from "Harper's
Pictorial History of the Civil
War (Annotated)"**

2005

Kara Walker

Offset lithography and silkscreen
on Somerset Textured paper



**Exodus of Confederates
from Atlanta, from
"Harper's Pictorial History
of the Civil War
(Annotated)"**

2005

Kara Walker

Offset lithography and silkscreen
on Somerset Textured paper

Basic Report

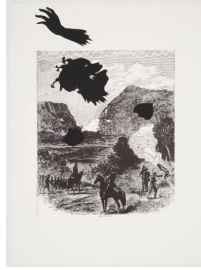


Signal Station, Summit of Maryland Heights, from "Harper's Pictorial History of the Civil War (Annotated)"

2005

Kara Walker

Offset lithography and silkscreen
on Somerset Textured paper



Buzzard's Roost Pass, from "Harper's Pictorial History of the Civil War (Annotated)"

2005

Kara Walker

Offset lithography and silkscreen
on Somerset Textured paper



Alabama Loyalists Greeting the Federal Gun-Boats, from "Harper's Pictorial History of the Civil War (Annotated)"

2005

Kara Walker

Offset lithography and silkscreen
on Somerset Textured paper