

Basic Report



On the Way

1990
Jacob Lawrence
Color lithograph



Sorghum Mill

1969
Thomas Hart Benton
Lithograph



Murder of Edith Cavell

1918
George Wesley Bellows
Lithograph



[Girl in Tree]

1922-1995
Lawrence Beall Smith
Lithograph



Our Good Earth

1942
John Steuart Curry
Lithograph



The Jackson Family

c. 1950
Martin Jackson
Lithograph



Artists Judging Works of Art, second state

1916
George Wesley Bellows
Lithograph

Basic Report



Model Draping

1890

James Abbott McNeill Whistler
Lithograph



Deadbrook after the Battle of Ezra's Church, from "Harper's Pictorial History of the Civil War (Annotated)"

2005

Kara Walker
Offset lithography and silkscreen
on Somerset Textured paper



Crest of Pine Mountain, Where General Polk Fell, from "Harper's Pictorial History of the Civil War (Annotated)"

2005

Kara Walker
Offset lithography and silkscreen
on Somerset Textured paper



Banks's Army Leaving Simmsport, from "Harper's Pictorial History of the Civil War (Annotated)"

2005

Kara Walker
Offset lithography and silkscreen
on Somerset Textured paper



Occupation of Alexandria, from "Harper's Pictorial History of the Civil War (Annotated)"

2005

Kara Walker
Offset lithography and silkscreen
on Somerset Textured paper



Foote's Gun-Boats Ascending to Attack Fort Henry, from "Harper's Pictorial History of the Civil War (Annotated)"

2005

Kara Walker
Offset lithography and silkscreen
on Somerset Textured paper

Basic Report



**An Army Train, from
"Harper's Pictorial History
of the Civil War
(Annotated)"**

2005

Kara Walker

Offset lithography and silkscreen
on Somerset Textured paper



**Lost Mountain at Sunrise,
from "Harper's Pictorial
History of the Civil War
(Annotated)"**

2005

Kara Walker

Offset lithography and silkscreen
on Somerset Textured paper



**Scene of McPherson's
Death, from "Harper's
Pictorial History of the Civil
War (Annotated)"**

2005

Kara Walker

Offset lithography and silkscreen
on Somerset Textured paper

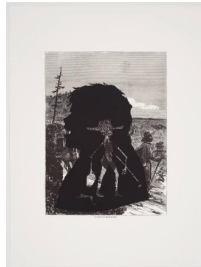


**Confederate Prisoners
Being Conducted from
Jonesborough to Atlanta,
from "Harper's Pictorial
History of the Civil War
(Annotated)"**

2005

Kara Walker

Offset lithography and silkscreen
on Somerset Textured paper



**Pack-Mules in the
Mountains, from "Harper's
Pictorial History of the Civil
War (Annotated)"**

2005

Kara Walker

Offset lithography and silkscreen
on Somerset Textured paper



**Cotton Hoards in Southern
Swamp, from "Harper's
Pictorial History of the Civil
War (Annotated)"**

2005

Kara Walker

Offset lithography and silkscreen
on Somerset Textured paper

Basic Report



**Exodus of Confederates
from Atlanta, from
"Harper's Pictorial History
of the Civil War
(Annotated)"**

2005

Kara Walker

Offset lithography and silkscreen
on Somerset Textured paper



**Signal Station, Summit of
Maryland Heights, from
"Harper's Pictorial History
of the Civil War
(Annotated)"**

2005

Kara Walker

Offset lithography and silkscreen
on Somerset Textured paper



**Buzzard's Roost Pass,
from "Harper's Pictorial
History of the Civil War
(Annotated)"**

2005

Kara Walker

Offset lithography and silkscreen
on Somerset Textured paper



**Alabama Loyalists
Greeting the Federal Gun-
Boats, from "Harper's
Pictorial History of the Civil
War (Annotated)"**

2005

Kara Walker

Offset lithography and silkscreen
on Somerset Textured paper