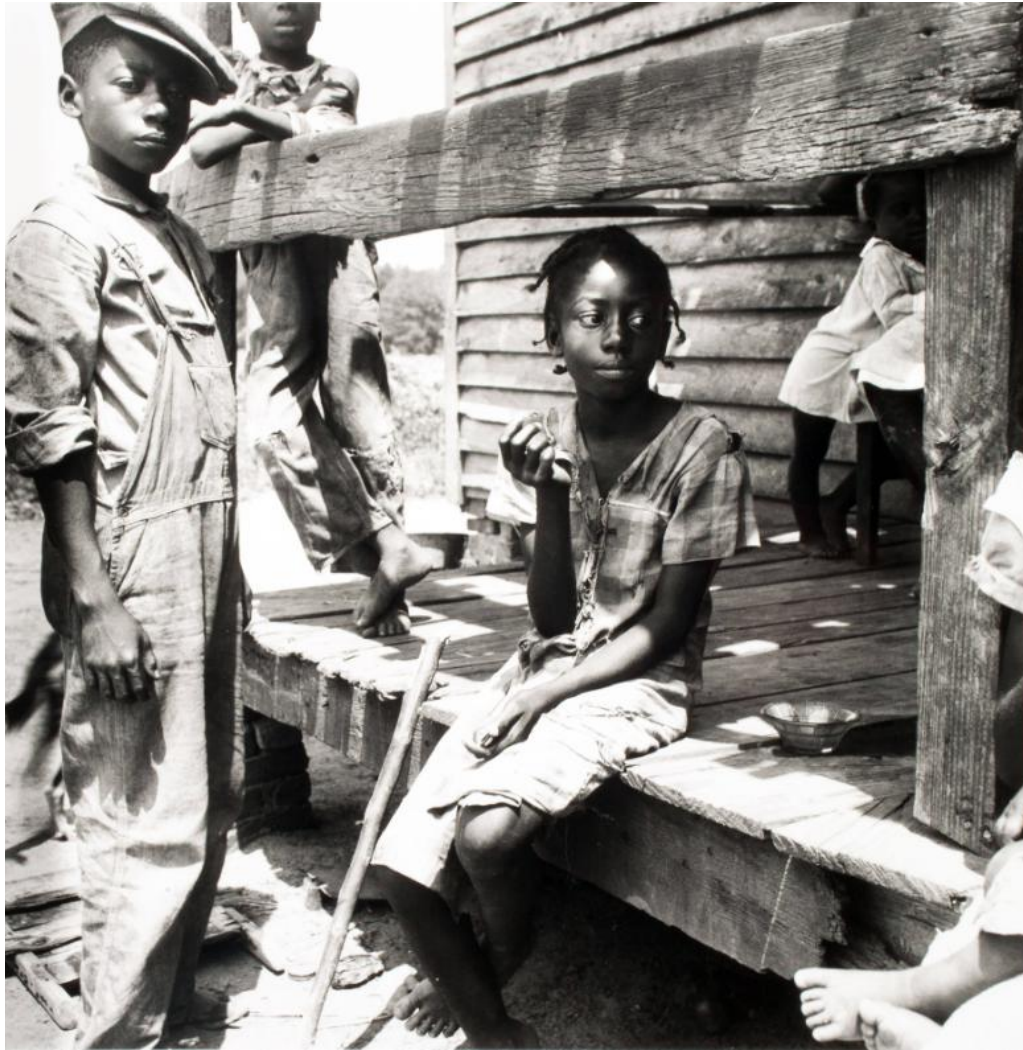


# Basic Detail Report



**Title: Mississippi Delta Negro Children**

Date: 1936, printed 2005

Primary Maker: com.gallerysystems.emuseum.core.entities.RecordXPerson@3e700

Medium: C-print

Description: Mississippi Delta Negro Children is the result of Lange's assignment to document rural America during the Great Depression on behalf of the Farm Security Administration. The photograph shows several black youth gathered on the porch of

# Basic Detail Report

a home. Lange has captured a moment of rest for the children, but it is clear from their worn-out and joyless expressions that such moments do not come often, and the weight of burdens far beyond their years has fallen upon their shoulders.

Dimensions: 7 1/2 x 7 1/2 in.