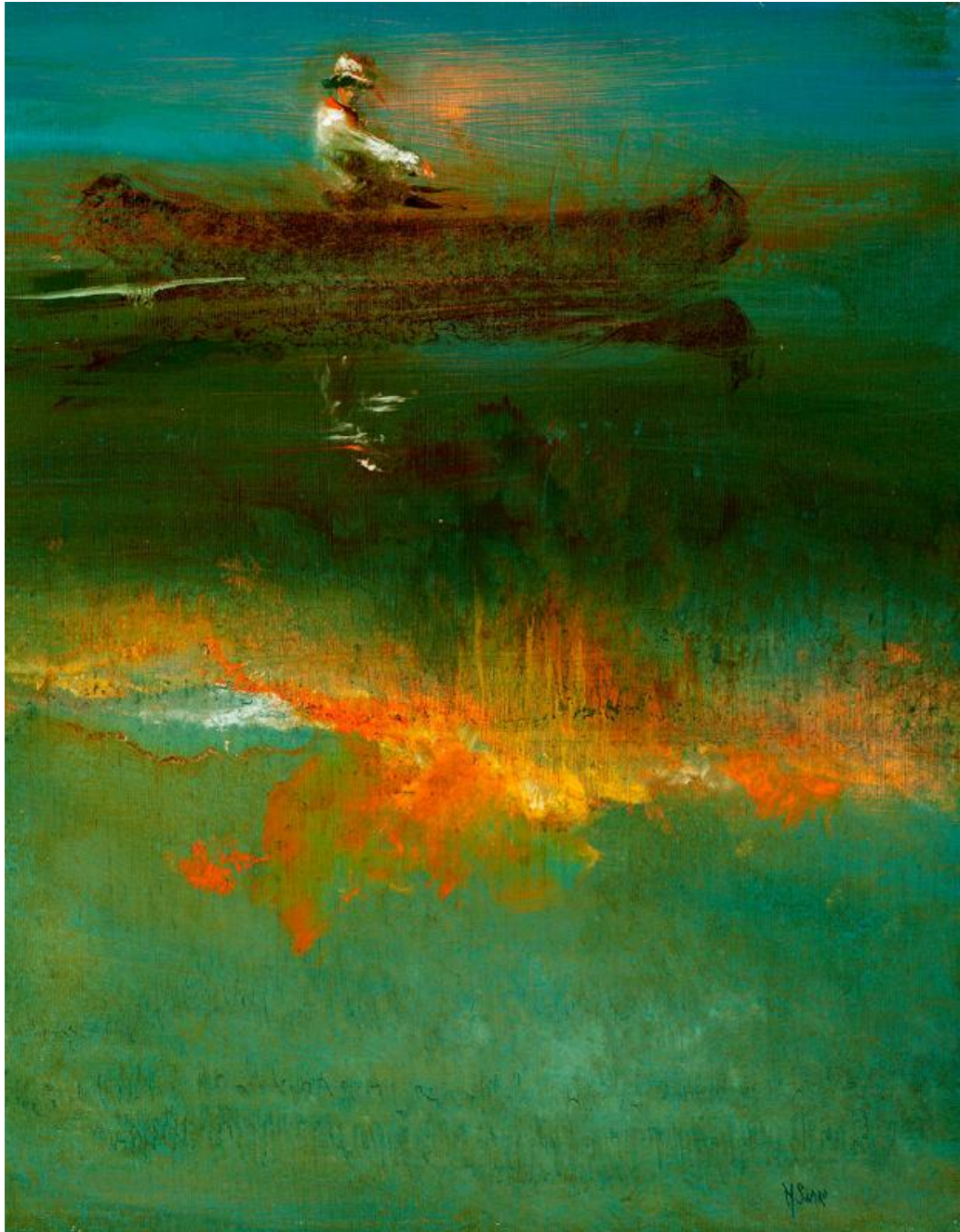


Basic Detail Report



Title: Still Water, Sunrise Reflected

Basic Detail Report

Date: 1999

Primary Maker: com.gallerysystems.emuseum.core.entities.RecordXPerson@3ee90

Medium: oil on panel

Description: In "Still Water, Sunrise Reflected", a single figure peacefully paddles a canoe at dawn on a lake or a river and gazes out at the viewer. Sapiro's use of dark blue and green tones and the subject of his painting recall the marine and canoeing scenes of Frank Benson, Winslow Homer, and Ogden Pleissner. His choice of colors and his loose application of the paint to the canvas' surface lend "Still Water, Sunrise Reflected" an imaginary, ethereal quality which borders on abstraction. The dreaminess and mystery of the painting also recall the work of the Symbolist artists Robert Loftin Newman and Albert Pinkham Ryder. The vibrant, orange pigment in the painting's center, a reflection of the morning sunlight, starkly contrasts with the dark shadow cast by the canoe on the water above. Sapiro exquisitely captured the ephemeral nature of the scene, for the voyager will vanish at any moment.

Dimensions: 20 x 16 in.