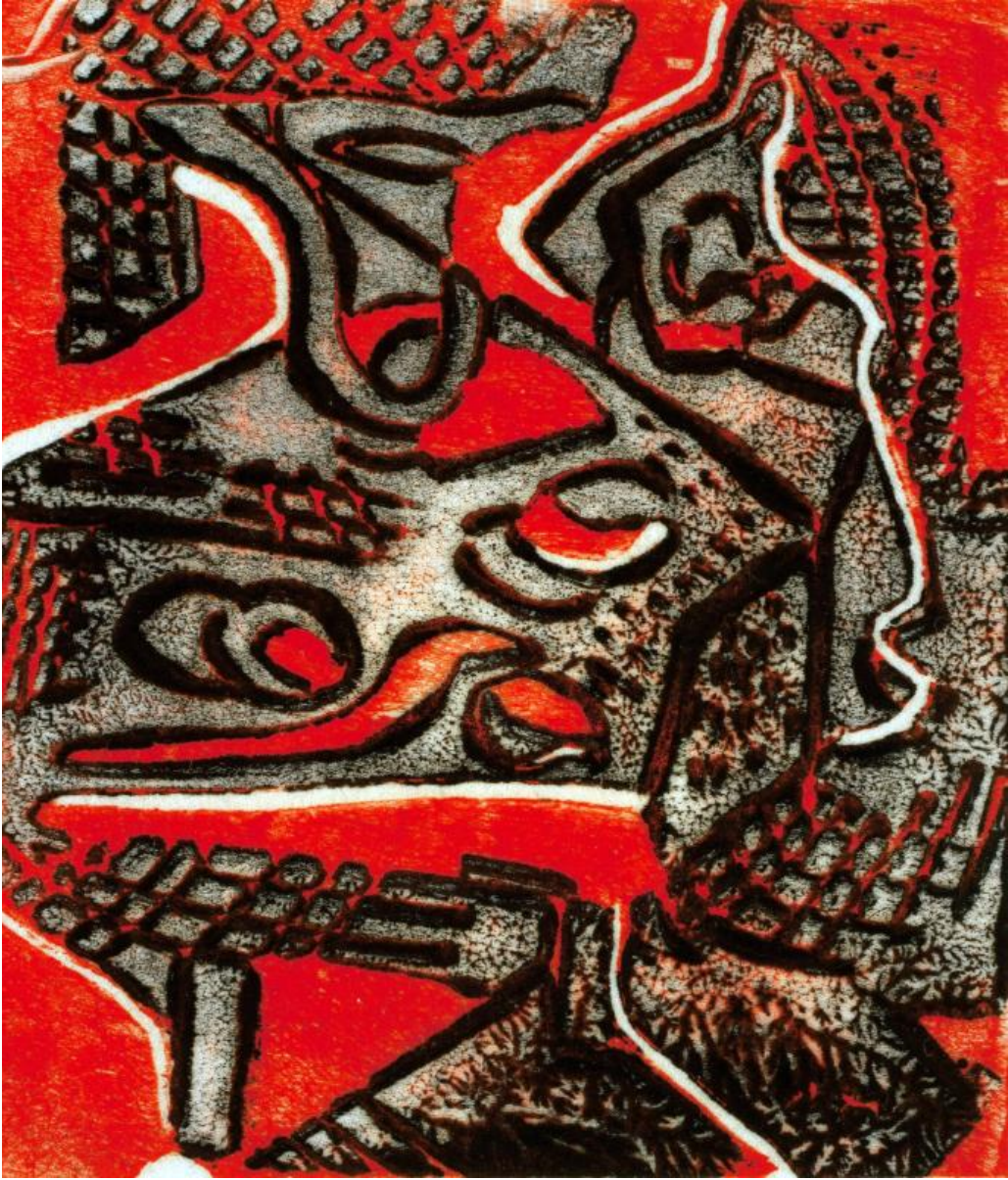


# Basic Detail Report



**Title: Woman at Table**

Date: n.d.

Primary Maker: com.gallerysystems.emuseum.core.entities.RecordXPerson@3e619

Medium: Color linoleum cut

# Basic Detail Report

Description: abstract figures

Dimensions:  $2 \frac{7}{8} \times 2 \frac{5}{8}$  in. (7.3 x 6.7 cm) Sheet:  $8 \frac{1}{4} \times 5 \frac{5}{8}$  in. (21 x 14.3 cm)