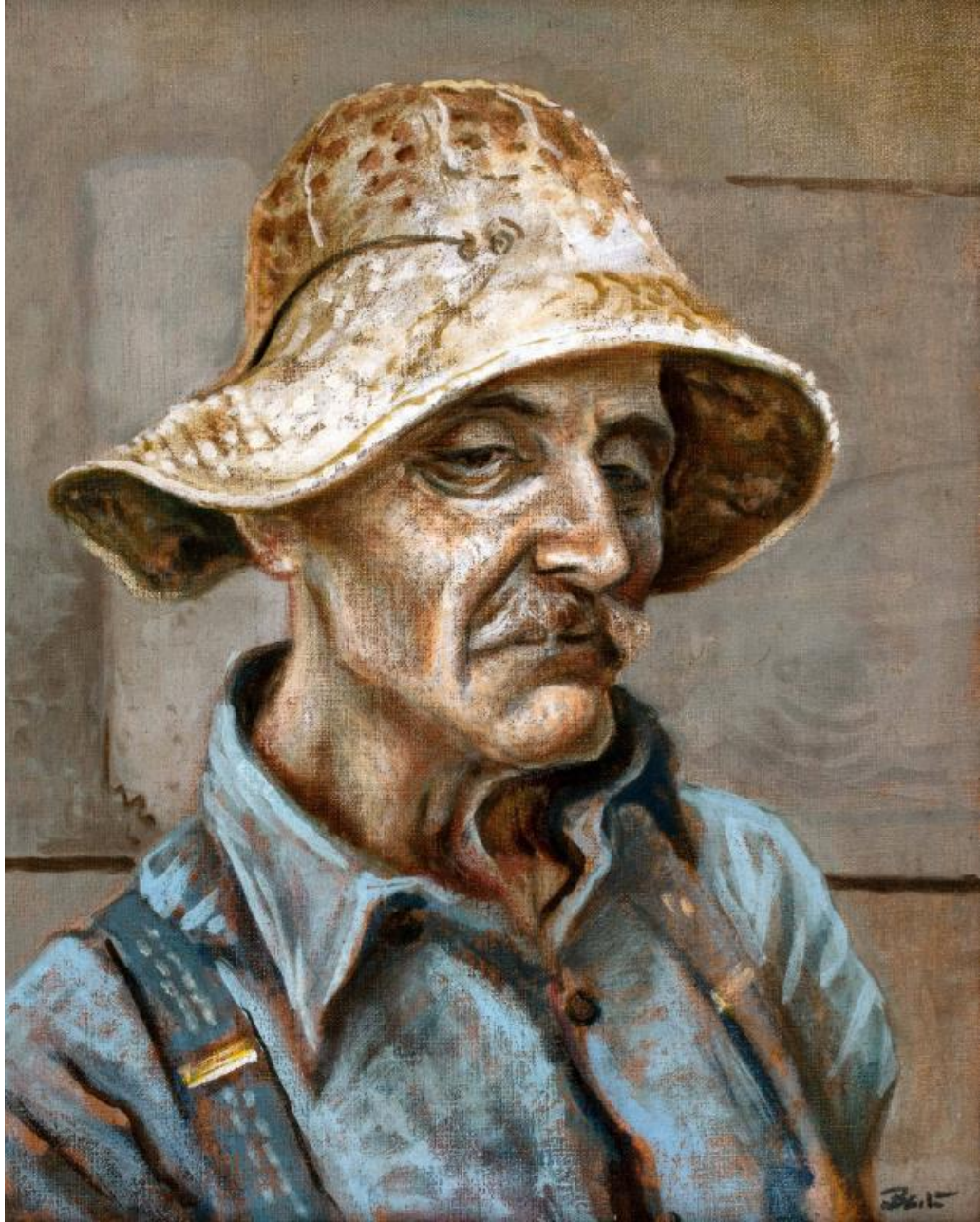


# Basic Detail Report



**Title: New England Farmer**

Date: c. 1941

# Basic Detail Report

Primary Maker: com.gallerysystems.emuseum.core.entities.RecordXPerson@3de00

Medium: Oil on canvas

Description: The rocky soil and cold climate combine to make farming a persistent struggle in New England. The deep furrows and lean, bony structure of his face provide ample proof that Benton's model was well aware of the problems of farmers. Benton was attracted to his face because of its profound expressiveness. Most likely, Benton's New England farmer was a neighbor on Martha's Vineyard where the artist summered for many years. When the artist died, he bequeathed "New England Farmer" to the Museum.

Dimensions: 20 x 16 in. (50.8 x 40.6 cm)