

# Basic Report



**Barberry Field, Lyme, Connecticut**  
1887-1908  
Allen Butler Talcott  
Oil on canvas



**Wide Connecticut**  
1936  
James Goodwin McManus  
Oil on canvas



**West Rock, New Haven**  
1849  
Frederic Edwin Church  
Oil on canvas



**Connecticut Farmhouse**  
1914-1963  
Warren William Baumgartner  
Watercolor on paper



**Stonington, Connecticut**  
1931-2003  
Charles DeCarlo  
Watercolor on board



**Landscape with Hunter**  
1853  
John Denison Crocker  
Oil on canvas



**Cromwell Barn in Mist**  
1973  
C. Royd Crosthwaite  
Egg tempera



**On a Connecticut Theme #3 (Bucolic Landscape #2)**  
1958  
Charles Sheeler  
Tempera on board



**Pile Driver, Bridgeport, Connecticut**  
1977  
Sperry Andrews  
Watercolor on paper

# Basic Report



## **Coastal Scene**

1854-1923

Fidelia Bridges

Gouache, watercolor and pastel  
on tan paper



## **Niantic River and Bay**

1958

Roger Wilson Dennis

Ink and wash on tan paper



## **Old Barn, Haddam, Connecticut**

1880-1950

Mary Loring Warner

Watercolor on paper laid on board



## **Connecticut Cedars**

1887-1908

Allen Butler Talcott

Oil on board



## **Early Morning Light**

1882

John Ferguson Weir

Oil on canvas



## **The Dragon Cloud, Old Lyme**

1903

Childe Hassam

Oil on canvas on board



## **Colonial Church**

c. 1908-1910

Ernest Lawson

Oil on canvas

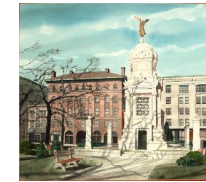


## **Hartford**

1920-1988

Arthur Gordon

Watercolor on paper



## **Central Park, New Britain**

c. 1985

T. W. Soyster

Watercolor on paper

# Basic Report



## **New Britain Museum of American Art**

C. 1980

Lou Bonamart

Watercolor on paper

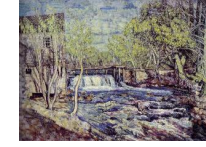


## **Full Moon Over Hartford V**

1987

Chet Kempczynski

Oil monotype

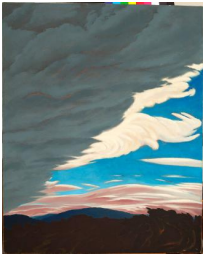


## **Bradbury Mill Dam in Spring**

c. 1910-15

Edward Francis Rook

oil on canvas



## **Rattlesnake Mountain**

1978

Jonathan Scoville

Oil on canvas



## **Bassett House at end of Franklin Square in New Britain**

c. 1870

Roy Bassett

Watercolor



## **Studio on Hill with Goats, Connecticut**

c. 1923

John Held Jr.

Watercolor on paper

# Basic Report



**Summer View from Painter Hill Road**

2003  
Tom Yost  
Oil on linen



**Factories, New Britain, CT**

1948  
Robert Eshoo  
Watercolor on paper



**Deep River Street**

n.d.  
Ann Dyson Grimm  
Oil on board



**Bridge**

2006  
Peter Waite  
Acrylic on panels



**Candlewood Lodge, Lyme**

1930  
James Goodwin McManus  
Oil on panel



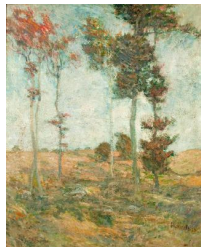
**Walnut Hill Park**

2008  
Kyle Andrew Phillips  
Oil on wood



**Pequabuck River, Farmington, 1895**

1895  
William Crothers Fittler  
Oil on canvas



**Summer Trees**

1873-1902  
John Henry Twachtman  
Oil on canvas



**Study of Ferns**

1864  
Fidelia Bridges  
Oil on board

# Basic Report



**Early Spring at the  
Farmington Country Club**

1870-1931  
Charles Foster  
Oil on panel



**New Britain as Seen From  
Newington**

1942  
John G. Matulis  
Tempera on panel



**Tatro's Farm, Avon, CT**

after 1935  
Lawrence Edwardson  
Oil on board